



# LIONHEART

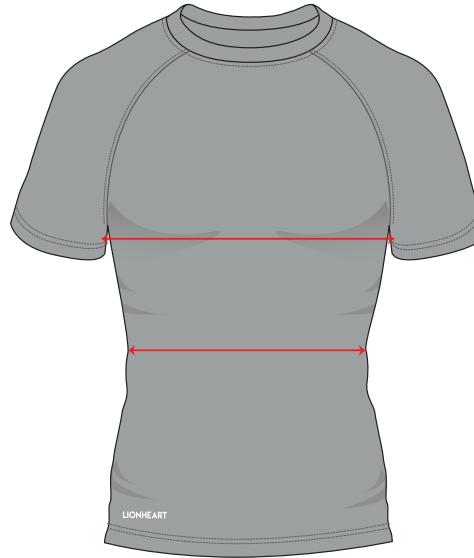
## SIZE GUIDE (INCHES) - ACTIVE LITE TEE

### YOUTH - GIRLS

SIZE	CHEST(IN)	WAIST(IN)
YS	21-24	20-22
YM	24-26	22-24
YL	26-28	24-26

### LADIES

SIZE	CHEST(IN)	WAIST(IN)
XS	28-30	26-28
S	30-33	28-31
M	33-36	31-34
L	36-39	34-36
XL	39-42	36-39
2XL	42-45	39-42



### YOUTH - BOYS

SIZE	CHEST(IN)	WAIST(IN)
YS	25-27	25-27
YM	27-29	27-29
YL	29-31	29-31

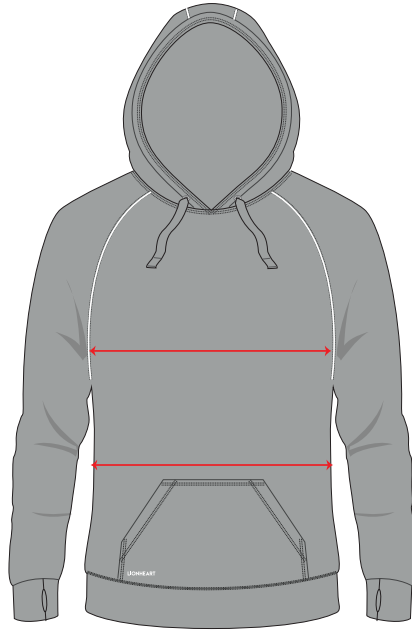
### UNISEX

SIZE	CHEST(IN)	WAIST(IN)
XS	31-34	31-33
S	34-37	33-36
M	37-40	36-39
L	40-43	39-42
XL	43-46	42-45
2XL	46-49	45-48

- Lionheart sizing guide is approximate, please use as a guide only
- **Chest:** Measure around the fullest part of chest, keeping the measuring tape horizontal
- **Waist:** Measure around the narrowest (typically the small of the back), keeping the measuring tape horizontal
- Measurements are taken on circumference in inches
- If you are on the borderline between two sizes, order the smaller size for a tighter fit or the larger size for a looser fit. If your measurements for chest and waist correspond to two different suggested sizes, order the size indicated by your chest measurements

# LIONHEART

## SIZE GUIDE (INCHES) - CLASSIC HOODIE



### YOUTH - UNISEX

SIZE	CHEST(IN)	WAIST(IN)
YS	26-28	26-28
YM	28-30	28-30
YL	30-32	30-32

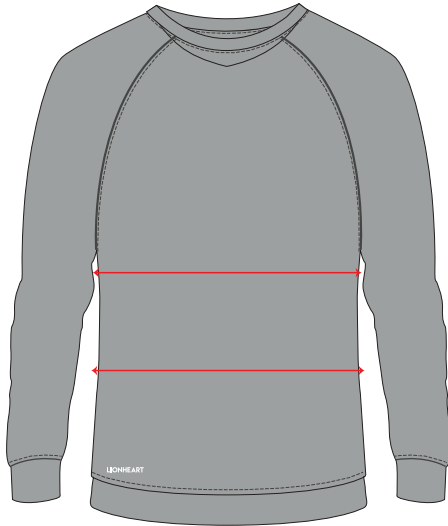
### UNISEX

SIZE	CHEST(IN)	WAIST(IN)
XS	32-35	32-35
S	35-38	35-38
M	38-41	38-41
L	41-44	41-44
XL	44-47	44-47
2XL	47-50	47-50

- Lionheart sizing guide is approximate, please use as a guide only
- **Chest:** Measure around the fullest part of chest, keeping the measuring tape horizontal
- **Waist:** Measure around the narrowest (typically the small of the back), keeping the measuring tape horizontal
- Measurements are taken on circumference in inches
- If you are on the borderline between two sizes, order the smaller size for a tighter fit or the larger size for a looser fit. If your measurements for chest and waist correspond to two different suggested sizes, order the size indicated by your chest measurements

# LIONHEART

## SIZE GUIDE (INCHES) - URBAN CREW



### YOUTH - UNISEX

SIZE	CHEST(IN)	WAIST(IN)
YS	26-28	26-28
YM	28-30	28-30
YL	30-32	30-32

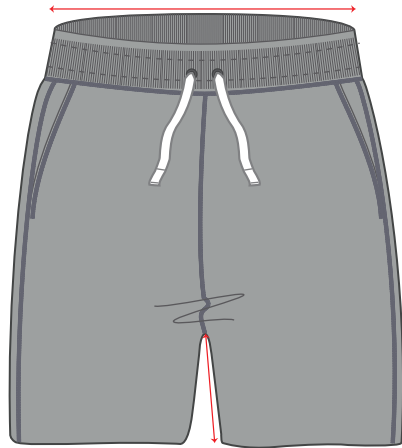
### UNISEX

SIZE	CHEST(IN)	WAIST(IN)
XS	32-35	32-35
S	35-38	35-38
M	38-41	38-41
L	41-44	41-44
XL	44-47	44-47
2XL	47-50	47-50

- Lionheart sizing guide is approximate, please use as a guide only
- **Chest:** Measure around the fullest part of chest, keeping the measuring tape horizontal
- **Waist:** Measure around the narrowest (typically the small of the back), keeping the measuring tape horizontal
- Measurements are taken on circumference in inches
- If you are on the borderline between two sizes, order the smaller size for a tighter fit or the larger size for a looser fit. If your measurements for chest and waist correspond to two different suggested sizes, order the size indicated by your chest measurements

# LIONHEART

## SIZE GUIDE (INCHES) - URBAN SHORTS



### YOUTH - UNISEX

SIZE	WAIST(IN)	INSEAM(IN)
YS	21-23	5.5
YM	23-24	6.25
YL	24-26	7

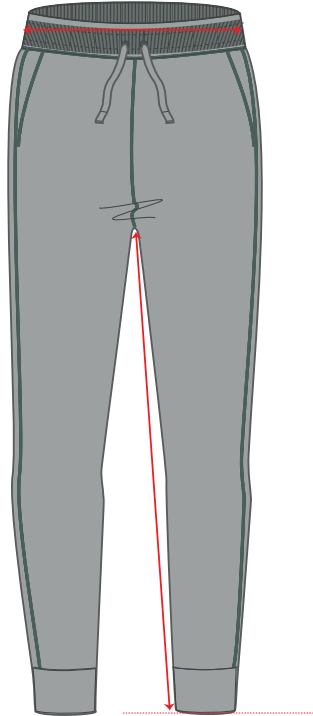
### UNISEX

SIZE	WAIST(IN)	INSEAM(IN)
XS	26-29	8
S	29-32	8.75
M	32-35	9.5
L	35-37	10.25
XL	37-39	11
2XL	39-41	11.75

- Lionheart sizing guide is approximate, please use as a guide only
- **Waist:** Measure around the narrowest (typically the small of the back), keeping the measuring tape horizontal
- **Inseam:** Measure from the top of crotch to the end of the leg, keeping the measuring tape vertical, measurements may vary by half inch depending on the style
- Measurements are taken in inches
- If you are on the borderline between two sizes, order the smaller size for a tighter fit or the larger size for a looser fit. If your measurements for chest and waist correspond to two different suggested sizes, order the size indicated by your chest measurements

# LIONHEART

## SIZE GUIDE (INCHES) - URBAN SWEATPANTS



### YOUTH - UNISEX

SIZE	WAIST(IN)	INSEAM(IN)
YS	19-21	26
YM	21-23	26.75
YL	23-25	27.5

### UNISEX

SIZE	WAIST(IN)	INSEAM(IN)
XS	25-27	27.75
S	27-30	28.5
M	30-33	29.25
L	33-36	30
XL	36-38	31
2XL	38-40	31.75

- Lionheart sizing guide is approximate, please use as a guide only
- **Waist:** Measure around the narrowest (typically the small of the back), keeping the measuring tape horizontal
- **Inseam:** Measure from the top of crotch to the end of the leg, keeping the measuring tape vertical, measurements may vary by half inch depending on the style
- Measurements are taken in inches
- If you are on the borderline between two sizes, order the smaller size for a tighter fit or the larger size for a looser fit. If your measurements for chest and waist correspond to two different suggested sizes, order the size indicated by your chest measurements